

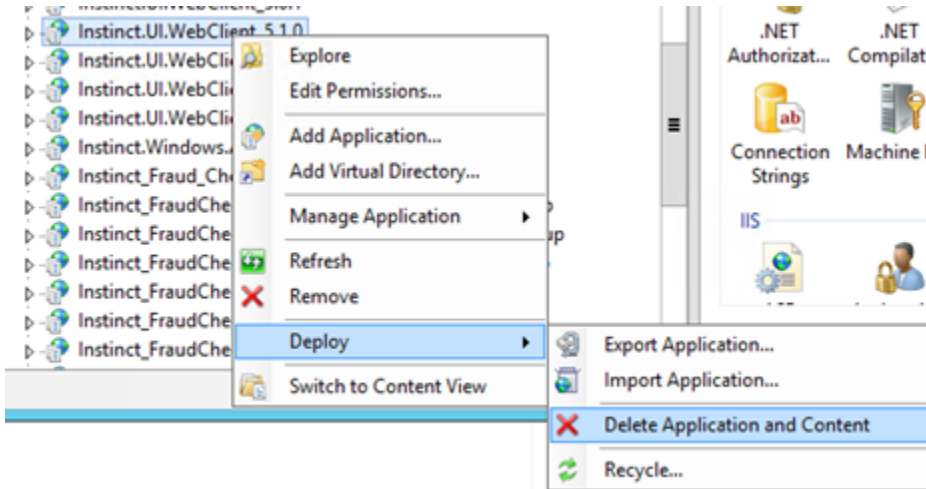
How to Install Instinct Web Application

Use this how-to guide to Install Instinct Web Client

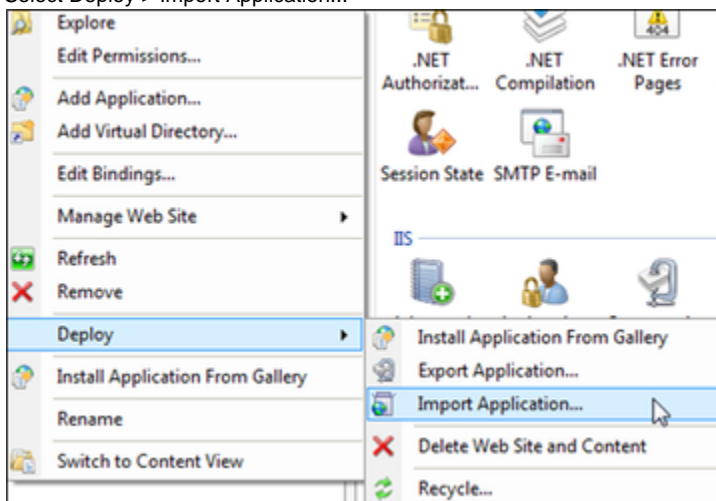
Instinct Web Application

Before doing this step, uninstall the current Instinct Web Application from "Internet Information Server (IIS) Manager". You can open the IIS Manager by selecting the Windows button, and then searching for "inetmgr".

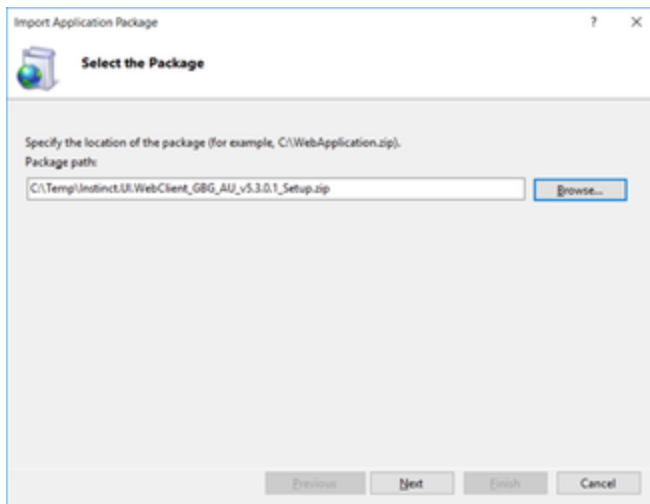
Right-click on the web application that was previously installed and select "Deploy > Delete Application and Content".



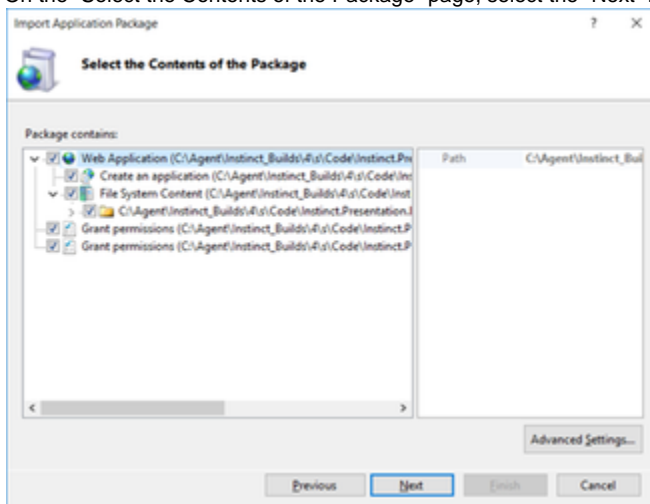
1. Unzip **Instinct_WebClient_Setup.zip**.
2. Copy the 3 zipped files to a temporary folder:
 - a. **UI.WebClient_Setup.zip**
 - b. **Service.WebFacade_Setup.zip**
 - c. **ADAuthentication_Setup.zip**
3. Open Internet Information Service Manager by selecting the Windows button, and then searching for "inetmgr". For more details, please refer to the below link.
<https://technet.microsoft.com/en-us/library/JJ635847.aspx>
4. Right-click on the site to install the Instinct Web Application.
5. Select Deploy > Import Application...



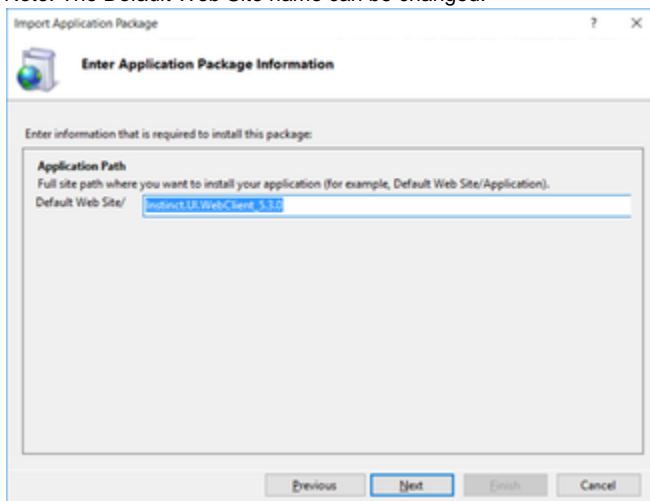
6. Browse and select the **UI.WebClient_Setup.zip** file from the temporary folder and then select the "Next" button.



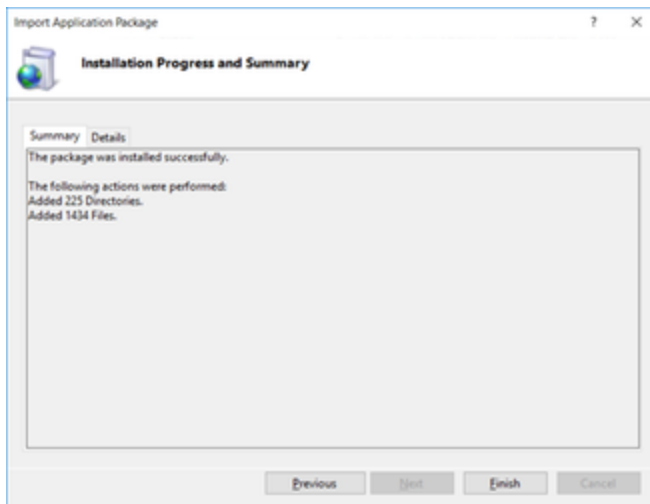
- On the "Select the Contents of the Package" page, select the "Next" button.



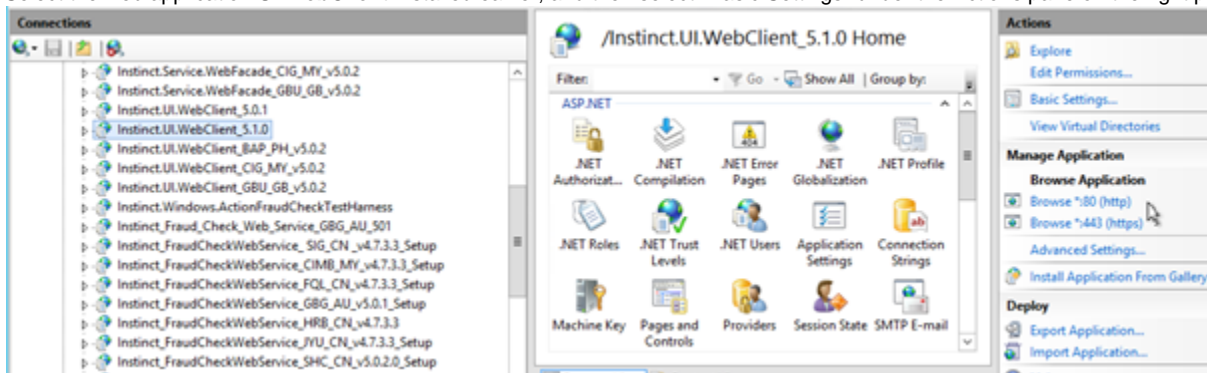
- On the "Enter Application Package Information" page select the "Next" button.
Note: The Default Web Site name can be changed.



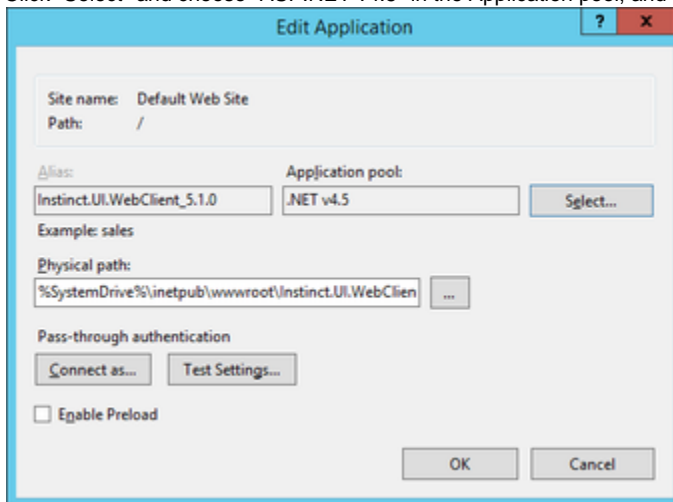
- On the "Installation Progress and Summary" page, select the "Finish" button.



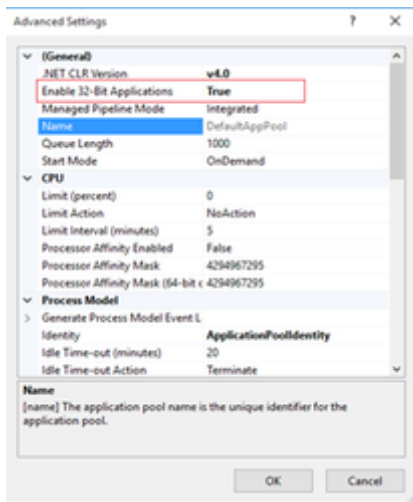
10. Repeat Steps 2-8 for the Instinct Web Facade installation, **Service.WebFacade_Setup.zip**.
11. Repeat Steps 2-8 for the Instinct AD Authentication installation, **ADAuthentication_Setup.zip**.
12. Select the web application **UI.WebClient** installed earlier, and then select "Basic Settings" under the Actions pane on the right panel.



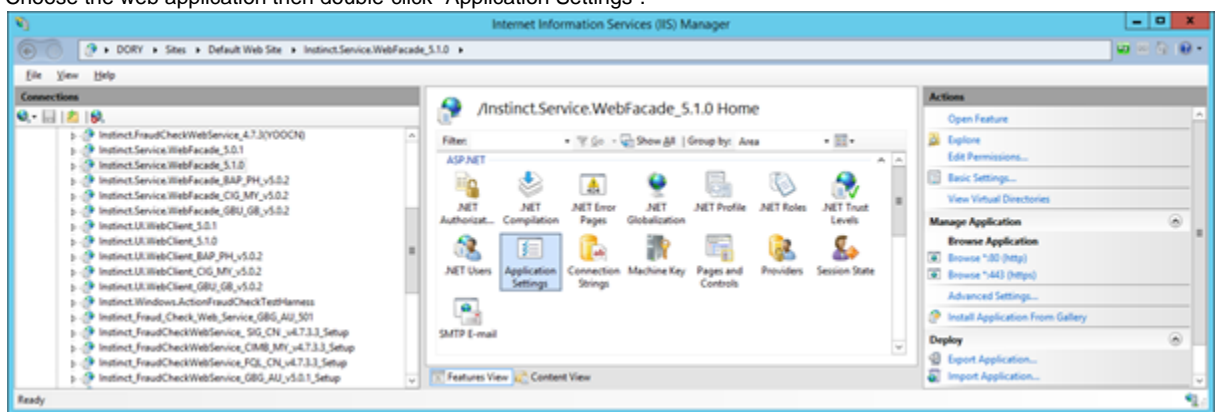
13. Click "Select" and choose "ASP.NET v4.5" in the Application pool, and then select the "OK" button.



14. Select the web application **Service.WebFacade** installed earlier, and then select "Basic Settings" under the Actions pane on the right panel.
15. Click "Select" and choose "ASP.NET v4.5" in the Application pool, and then select the "OK" button. You may need to change following settings in the Application pool that you have selected in the above steps.



16. You may need to change a number of parameters in the configuration file for **Instinct.Service.WebFacade** web application.
- Choose the web application then double-click "Application Settings".



- Change each parameter value by double-clicking them.

Name	Value
InputFile.Format	ASCII
Instinct.BatchFileDelimiter	
Instinct.DelimiterCharacter	
Instinct.LogDirectory	C:\temp\
Instinct.TempDirectory	C:\INSTINCT\INPUT
Instinct.WriteLog	Y

- Format: ASCII
 - BatchFileDelimiter: |
 - DelimiterCharacter: |
 - LogDirectory: C:\temp\
 - TempDirectory: C:\INSTINCT\INPUT
 - WriteLog: Y
- Change custom parameter in the web.config.

```

Web.config - Notepad
File Edit Format View Help
<section name="Default" type="Instinct.Common.Crosscutting.CustomConfiguration, Instinct.Common.Crosscutting"
allowAllocation="true" allowDefinition="Everywhere" />
</sectionGroup>
<sectionGroup name="applicationSettings" type="System.Configuration.ApplicationSettingsGroup, System,
Version=4.0.0.0, Culture=neutral, PublicKeyToken=b77a5c561934e089">
  <section name="Instinct.Business.Logic.Properties.Settings" type="System.Configuration.ClientSettingsSection,
System, Version=4.0.0.0, Culture=neutral, PublicKeyToken=b77a5c561934e089" requirePermission="false" />
</sectionGroup>
<section name="loggingConfiguration"
type="Microsoft.Practices.EnterpriseLibrary.Logging.Configuration.LoggingSettings,
Microsoft.Practices.EnterpriseLibrary.Logging, Version=6.0.0.0, Culture=neutral, PublicKeyToken=31bf3856ad364e35"
requirePermission="true" />
</configSections>
<connectionsGroup>
  <default>
    <databaseConnection Order="1" InstinctDataSource="SAOORFISH\SQL2014" InstinctInitialCatalog="InstinctGBGAU538"
InstinctUserId="InstinctSysAdm" InstinctPassword="Instinct" InstinctPasswordEncrypted="false"
InstinctIntegratedSecurity="false" InstinctOrganisation="GBG" InstinctCountryCode="AU"
BatchFileUploadDirectoryPath="C:\INSTINCT\INPUT" />
  </default>
</connectionsGroup>
<loggingConfiguration configSource="log.config" />
<appSettings>
  <add key="Instinct.BatchFileDelimiter" value="|" />
  <add key="InputFile.Format" value="ASCII" />
  <add key="Instinct.TempDirectory" value="C:\INSTINCT\INPUT" />
  <add key="Instinct.WriteLog" value="Y" />
  <add key="Instinct.LogDirectory" value="C:\temp\" />
  <add key="Instinct.DelimiterCharacter" value="|" />
</appSettings>

```

- i. configSections/sectionGroup/section/"Default": Defines the name of the default configuration.
 - ii. connectionsGroup/Default/dataBaseConnection: contains the parameters for every database:
 - iii. Order: order to show the database in a list.
 - iv. InstinctDataSource: database server.
 - v. InstinctInitialCatalog: name of the database.
 - vi. InstinctUserId: InstinctSysAdm
 - vii. InstinctPassword: Instinct.
 - viii. InstinctPasswordEncrypted=False
 - ix. InstinctIntegratedSecurity: False.
 - x. InstinctCountryCode: AU.
 - xi. BatchFileUploadDirectoryPath: C:\INSTINCT\INPUT.
- d. Change web reference parameter in the facade web.config:

```

<applicationSettings>
  <Instinct.Business.Logic.Properties.Settings>
    <setting name="Instinct_Business_Logic_WebReference_GetAttachments_ep" serializeAs="String">
      <value>http://localhost/ImagesWebServiceSetup/GetAttachments_ep.asmx</value>
    </setting>
  </Instinct.Business.Logic.Properties.Settings>
</applicationSettings>

```

- i. Instinct_Business_Logic_WebReference_GetAttachments: parameter which contains the location to get images.

17. You may need to change some parameters in the configuration file for **UI.WebClient** web application.

- a. Choose the web client application then double-click "Application Settings".
- b. Change each parameter value by double-clicking each parameter name:

Name	Value
AD.Token.Key	Pu8536M5eZFEX5aBQOVtKw6Z7wR8qA59AoPr/ODILt4=
Client.Timeout	600
InputFile.Format	ASCII
Instinct.ADAuthentication	http://localhost/Instinct.ADAuthentication/
Instinct.DateDisplayForma...	dd/MM/yyyy
Instinct.DateDisplayForma...	DD/MM/YYYY
Instinct.IsTime24hrsFormat	false
Instinct.LanguageSupport	en,zh,es,fr
Instinct.NameProduct	Instinct
Instinct.SSOLogoutPage	
Instinct.SSOUserKey	
Print.CSVLimiter	,
Security.SslEnabled	false
Security.Timespans	0,5,10,15
Security.TokenSecret	fN00qrzuSM_NUWKQ2ZBbIkQoJl8wAE-gUFihC8F9wjo
Support.Email	customer.support@gbgplc.com
Support.Telephone	(+61) 1800 312 860 (Monday to Friday, 9:00 a.m. to 5:00 p.m. local business hours)
Token.Timeout	180

- i. Timeout: 600 (seconds).
- ii. Timeout: 180 (minutes)
- iii. Format: ASCII

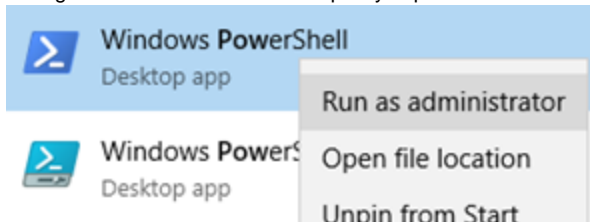
- iv. Timespans: 0,5,10,15 (seconds).
- v. CSVLimiter: comma (,).
- vi. NameProduct: Parameter which contains the name of the product.
- vii. DateDisplayFormatMomentJs: date format in client (DD/MM/YYYY).
- viii. DateDisplayFormatDotNet: dd/MM/yyyy
- ix. IsTime24hrsFormat: support to 24 or 12 hours format (false).
- x. SSOLUserKey:
- xi. SSOLogoutPage
- xii. LanguageSupport: Languages supported (en,zh,es,fr).
- xiii. ADAAuthentication: Link for AD Authentication
- xiv. Token.Key: AD token Key

Encrypting the Web Config

The below steps are required to secure internet exposed production environments. For other environments, these steps are not required.

Important: If SSL is to be enabled please ensure this is done prior to running the PowerShell scripts. See Section 5. Adding SSL for further information on SSL Configuration. If Certificates are to be used, please ensure this is done prior to running the PowerShell scripts. See Section 6. Securing the Web Façade WCF for further information on Certificates.

1. Change the PowerShell execution policy. Open a PowerShell console with "Run as administrator".

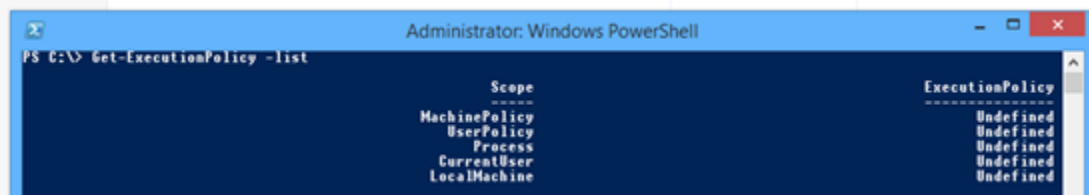


- a. In the PowerShell window Change the current directory to the location of the generate script in the web client. The Web client package will have a folder called "PowerShellScripts". Usually, it is under the wwwroot folder.

Example: `cd C:\inetpub\wwwroot\Instinct.UI.WebClient\PowerShellScripts.`

```
PS C:\inetpub\wwwroot\Instinct.UI.WebClient_5.1.0> cd C:\inetpub\wwwroot\Instinct.UI.WebClient_5.1.0
PS C:\inetpub\wwwroot\Instinct.UI.WebClient_5.1.0>
```

- b. Run the command "**Get-ExecutionPolicy -list**" to see the current execution policy.



- c. To change the policy run the following:

"Set-ExecutionPolicy -Scope LocalMachine -ExecutionPolicy RemoteSigned", a confirmation will be displayed, enter "y".

```
PS C:\inetpub\wwwroot\Instinct.UI.WebClient_5.1.0> Set-ExecutionPolicy -Scope LocalMachine -ExecutionPolicy RemoteSigned
Execution Policy Change
The execution policy helps protect you from scripts that you do not trust. Changing the execution policy might expose you
to the security risks described in the about_Execution_Policies help topic at
http://go.microsoft.com/fwlink/?LinkID=135170. Do you want to change the execution policy?
[Y] Yes [A] Yes to All [N] No [L] No to All [S] Suspend [?] Help (default is "N"): Y
```

- d. Run **Get-ExecutionPolicy** again to check the policy has been changed.



2. Before continue create a copy of the configuration files for the Web client (**UI.WebClient**) and web facade (**Instinct.Service.WebFacade**). These copied files are for backup purposes.PowerShell Script in **UI.WebClient**

Instinct.UI.WebClient	Instinct.Service.WebFacade
<div> <div>Name</div> <div> <div>Global.asax</div> <div>index.html</div> <div>Log.config</div> <div>login.html</div> <div>packages.config</div> <div>Web.config</div> </div> </div>	<div> <div>Name</div> <div> <div>bin</div> <div>PowerShellScripts</div> <div>ApplicationService.svc</div> <div>FileUploadService.svc</div> <div>Log.config</div> <div>packages.config</div> <div>SecurityService.svc</div> <div>Web.config</div> </div> </div>

Note: Ensure that you have the correct configuration and a copy of every configuration file before continuing. Once you run the next scripts. You won't be able to change the Application Settings in IIS. All the information will be encrypted.

a. PowerShell Script in **Instinct.UI.WebClient**

- i. In PowerShell, find the deploy the web client PowerShell scripts. All PowerShell scripts are in a folder called "PowerShellScripts". It is usually located in C:\inetpub\wwwroot\Instinct.UI.WebClient\PowerShellScripts.

```
PS C:\inetpub\wwwroot\Instinct.UI.WebClient_5.1.0\PowerShellScripts> dir

Directory: C:\inetpub\wwwroot\Instinct.UI.WebClient_5.1.0\PowerShellScripts

Mode                LastWriteTime         Length Name
----                -
-a----          22/07/2016   2:25 PM           5393 DeployWebClient.ps1
-a----          22/07/2016   2:25 PM           247  GenerateSecret.ps1

PS C:\inetpub\wwwroot\Instinct.UI.WebClient_5.1.0\PowerShellScripts>
```

- ii. Once you are in the scripts location run the script, ".\DeployWebClient.ps1".

```
PS C:\inetpub\wwwroot\Instinct.UI.WebClient_5.1.0\PowerShellScripts> .\DeployWebClient.ps1
Start of script.
Event Log source created. Please check the event viewer to confirm this.
Enabling windows authentication...
Retrieving web.config for app...
Injecting security token...
Encrypting config...
Microsoft (R) ASP.NET RegIIS version 4.0.30319.0
Administration utility to install and uninstall ASP.NET on the local machine.
Copyright (C) Microsoft Corporation. All rights reserved.
Encrypting configuration section...
Succeeded!
Config encrypted. Please check the web.config file to verify the encryption.
End of script.
PS C:\inetpub\wwwroot\Instinct.UI.WebClient_5.1.0\PowerShellScripts>
```

- iii. Web Client Configure file before and after the encryption

Web Client Configuration file before

```
<appSettings>
  <!-- Please encrypt this appSettings block using the installation utility provided with Instinct -->
  <add key="Security.TokenSecret" value="Hm8gr0m_maaQ2803kq03Bm6-g0r3C8Rw9j0" />
  <add key="Security.SslEnabled" value="false" />
  <add key="Support.Telephone" value="(415) 1800 312 800 (Monday to Friday, 9:00 a.m. to 5:00 p.m. local business )
  <add key="Support.Email" value="customer.support@igpsit.com" />
  <add key="Client.Timeout" value="600" />
  <!-- Seconds -->
  <add key="Token.Timeout" value="180" />
  <!-- Minutes -->
  <add key="InputFile.Format" value="NSC11" />
  <add key="Security.Timespan" value="0,5,10,15" />
  <add key="Print.CSVDelimiter" value="," />
  <add key="Instinct.NameProduct" value="Instinct" />
  <add key="Instinct.DefaultDisplayFormatName" value="DD/MM/YYYY" />
  <add key="Instinct.DefaultDisplayFormatDate" value="ddMM/yyyy" />
  <add key="Instinct.IsTime24hrsFormat" value="false" />
  <add key="Instinct.SSOUserKey" value="" />
  <add key="Instinct.SSOLogoutPage" value="" />
  <add key="Instinct.LanguageSupport" value="en,th,en,fr" />
  <add key="Instinct.AADAuthentication" value="http://localhost/Instinct.AADAuthentication/" />
  <add key="AAD.Token.Key" value="Pub530P5e21X5u8QvXk627u8kq5N4qr/0015a" />
</appSettings>
```

Web Client Configuration file after

```
<appSettings configProtectionProvider="RsaProtectedConfigurationProvider">
  <EncryptedData Type="http://www.w3.org/2001/04/xmlenc#Element"
    xmlns="http://www.w3.org/2001/04/xmlenc#"
    <EncryptionMethod Algorithm="http://www.w3.org/2001/04/xmlenc#tripledes"
      <KeyInfo xmlns="http://www.w3.org/2000/09/xmldsig#"
        <EncryptedKey xmlns="http://www.w3.org/2001/04/xmlenc#"
          <EncryptionMethod Algorithm="http://www.w3.org/2001/04/xmlenc#rsa-1"
            <KeyInfo xmlns="http://www.w3.org/2000/09/xmldsig#"
              <KeyName>Rsa- Key</KeyName>
            </KeyInfo>
            <CipherData>
              <CipherValue>qv8Qh3Zdt5IBZ7ptb1rzcq1jQba8K31Zfek1QhPc6Rf1q-Ax2ZV
+000ZetEFB21brvtJnt29RALd89/2ezn8AA19xR4H9K1da7u8kQ6GoZ2EXqDuFpSR/LPCJ13CHuH
+Hc41ja1N7uFpDv1jValtG105d3U30befej14tQ0RumHm0
+mA1A1jKn4FVhFgn1Nh3SMP1s59nOP8311UMch1nx1Fum4BKPL531p06H9expU3169G3mf1h1Zb
</CipherData>
          </EncryptedKey>
        </KeyInfo>
        <CipherData>
          <CipherValue>uyT3XY+15f0B9K1T1V3vZC0h7112YfObd26fzsv7BurFOQLLDowG
+uQ10B6yGyfhQt/hTU237TawePu2XrEU0yK1ZQrR8R70FE6LY0Lo9L
+UPxJ2k8ntPyC1A1L6p0-QegQ4404ed7JG6579Q86q4a0RhfAPu0m0Co28rpStT32bTnFYczLm
Sp3JTX1JGAG01r11HmKTzEt7HkmvelFY8YbK88NDv1os4/215e92sp+k0GCJ1t7Ehc+bnkvc0bH2
+uW7fwJCZVch1D7x2P1A4Er0Ys037+W6k0T4uQvxb0rhFh1F7VzakyKtm191NDpusYq1P06qonT4
+a2u1p1Qm6LAdtH9isQ0r-jghuK3QKRu1P/Gudmh00K8qR02177mm1zF6z07D06tHh+Pd/M3biSeK4
+0A29zmk7BkH10K/uyrn5Jt17aYhLWYh2F3E2kn09YPL280Dn0HvEVxT9nsG7Z2Ka510U8W15ph
</CipherData>
        </EncryptedData>
      </appSettings>
```

b. PowerShell Script in **Instinct.Service.WebFacade**.

- In PowerShell, find the deploy facade ("DeployWebClient.ps1"). The PowerShell script is in a folder called "PowerShellScripts". It is usually located in C:\inetpub\wwwroot\Instinct.Service.WebFacade\PowerShellScripts.

```
PS C:\inetpub\wwwroot\Instinct.UI.WebClient_5.1.0\PowerShellScripts> cd C:\inetpub\wwwroot\Instinct.Service.WebFacade_5.1.0\PowerShellScripts
PS C:\inetpub\wwwroot\Instinct.Service.WebFacade_5.1.0\PowerShellScripts> dir

Directory: C:\inetpub\wwwroot\Instinct.Service.WebFacade_5.1.0\PowerShellScripts

Mode                LastWriteTime         Length Name
----                -
-a----          22/07/2016   2:25 PM             4294 DeployWebFacade.ps1

PS C:\inetpub\wwwroot\Instinct.Service.WebFacade_5.1.0\PowerShellScripts>
```

- Once you are in the script location run the script, ".\DeployWebFacade.ps1".

```
The Event Log source already exists. Skipping this step...
Encrypting config...
Microsoft (R) ASP.NET RegIIS version 4.0.30319.0
Administration utility to install and uninstall ASP.NET on the local machine.
Copyright (C) Microsoft Corporation. All rights reserved.
Encrypting configuration section...
Succeeded!
Microsoft (R) ASP.NET RegIIS version 4.0.30319.0
Administration utility to install and uninstall ASP.NET on the local machine.
Copyright (C) Microsoft Corporation. All rights reserved.
Encrypting configuration section...
Succeeded!
Microsoft (R) ASP.NET RegIIS version 4.0.30319.0
Administration utility to install and uninstall ASP.NET on the local machine.
Copyright (C) Microsoft Corporation. All rights reserved.
Encrypting configuration section...
Succeeded!
Config encrypted. Please check the web.config file to verify the encryption.
End of script.
```

- Web Facade Configure file before and after the encryption

Web Facade Configuration file Before

```
<appSettings>
  <add key="Instinct.BatchFileDelimiter" value="|" />
  <add key="InputFile.Format" value="ASCII" />
  <add key="Instinct.TempDirectory" value="C:\INSTINCT\INPUT" />
  <add key="Instinct.WriteLog" value="Y" />
  <add key="Instinct.LogDirectory" value="C:\temp\" />
  <add key="Instinct.DelimiterCharacter" value="|" />
</appSettings>
```

Web Facade Configuration file After

```
    <appSettings configProtectionProvider="RsaProtectedConfigurationProvider">
  <EncryptedData Type="http://www.w3.org/2001/04/xmlenc#Element"
    xmlns="http://www.w3.org/2001/04/xmlenc#">
    <EncryptionMethod Algorithm="http://www.w3.org/2001/04/xmlenc#tripledes-cbc" />
    <KeyInfo xmlns="http://www.w3.org/2000/09/xmldsig#">
      <EncryptedKey xmlns="http://www.w3.org/2001/04/xmlenc#">
        <EncryptionMethod Algorithm="http://www.w3.org/2001/04/xmlenc#rsa-1_5" />
        <KeyInfo xmlns="http://www.w3.org/2000/09/xmldsig#">
          <KeyName>Rsa Key</KeyName>
        </KeyInfo>
      </EncryptedKey>
    </KeyInfo>
    <CipherData>
      <CipherValue>TEv1qumKrB6pTrMSreTegmyRyJyJo8fL1LLEUCGvXdPBQYJYM0uIXnVXbiVyE3o59pY98zI
oToRmkFSdqqdbB5XCcqqjhCpM8LKgZRT0GSv40xthCZj1ndkyqM76d4kHrbqahMsOG4R57E3ddQL2Za3nM6JG:
      </CipherValue>
    </CipherData>
  </EncryptedData>
  <CipherData>
    <CipherValue>OQk5m55uILgPnPJ4Xhr89KZD4tZms3MfZ0R1GBtUTMGfVrmLYbAzrdi+rk9Tehh6jD:
+cS9h9Z1Xvldz7CArnc7TDg2f6h9HZtEwEetBu29rtD3LYzAbyMhUUFHyKQHUp3FjU8S1N1JF2+SuTKzrIdGt:
OT40XjYIwKamhzJOSof72Qfy/N/0TowqSeKE8xd1PpNfdwF41GeT80V80PKetMQ/rULREgsV1NuQIpxhVeD1:
+0P7IKKK/FN9E00HRRYrux2Yk3Y4j/3JA9C1YFL8IExuS7dJMKNR1YH9KTTokh1DwrTt2jFKJs4+y42Ruvslw
    </CipherValue>
  </CipherData>
</appSettings>
```

3. Create one folder called "tempDownload" in Web client application installation folder, usually is C:\inetpub\wwwroot\UI.WebClient\ and give IIS_IUSRS read/write permission OR give read/write permission of web app installation folder to IIS_IUSRS and system will create the folder automatically.

Related articles

- [Web service SSL/TLS Secure Channel Error \(v5.0\)](#)
- [Web Session Lock Timeout Period](#)
- [Web Lock Timeout Period](#)
- [How to Install Instinct Web Application](#)
- [How to install Instinct License Key](#)